

TECHNICAL DATASHEET

CNC – BED TYPE MILLING MACHINE with Rotary table

Manufacturer	CORREA ANAYAK
Type	VH Plus-4000 HS
Control	HEIDENHAIN iTNC 530
Built Retrofit-Level	2008 RECONDITIONING



Travels

Table movement (X-Axis)	4.000	mm
Cross movement (Y-Axis)	1.700	mm
Vertical movement (Z-Axis)	1.500	mm

Clamping table

Table surface	4.200 x 1.100	mm
Max. workpiece weight	10.000	kg
Number and size of T-slots	7 x 22	mm H12
Distance of T-slots	150	mm

Technical Datasheet CNC-Bed Type Milling Machine with Rotary Table ANAYAK VH-4000Plus

Feeds

X-, Y- and Z-Axis, stepless	2 - 10.000	mm/min.
Rapid traverse in X / Y / Z	22.500	mm/min
Max. feed forces in X-Y-Z	31.400	N

Nicolas CORREA Universal-NC-Milling Head UAD

Swivel front/rear plane	automatically		
Indexing	0,02 x 0,02	°	= 162 Mio. Positions!
Clamping force, inner Hirth spline	approx. 22.000	kg	
Motor power	30	kW	
Max. torque	1.500	Nm	
Number of gear stages	2		
Max. gear reduction	1:5,5		
Speed range, continuously variable	60 - 6.000	min-1	
Tool holder	SK50	DIN 69871	
Tightening bolts		DIN 69872-A	
Head lubrication	Air-oil mixture with separate automatic lubrication pump		
Cooling system for spindle bearings	Yes		
Cooling system for gearbox	Yes		

Automatic toolchanger

Tool capacity	60	slots	
Max. tool diameter	125/200	mm	occupied / free
Max. tool length	400	mm	
Max. tool weight	25	kg	

Guides, drive and measuring systems

- All axis drives with digital drives manufactured by HEIDENHAIN
- Direct measuring systems for X, Y, and Z axes manufactured by HEIDENHAIN
- X, Y, and Z axes guided by high-precision linear guides for maximum precision and dynamics
- Precision ball screws with preloaded nuts in X, Y, and Z axes

Coolant system with belt filter

- Coolant outlet on the front of the milling head
- Internal coolant supply, approx. 36 bar and 30 l/min
- Tank volume approx. 350 l
- Coolant pump with delivery volume approx. 20 l/min at 4 bar

Chip conveyor

- 2 chip conveyors along the machine table
- 1 ascending conveyor with coolant tank and lifting pump on the left side of the machine, rear ejection, ejection height approx. 1,000 mm

Tel. +49 (0) 6096 / 97060 | fleckenstein@fleckenstein-machine.com | www.fleckenstein-machine.com

Dimensions and weight

Footprint machine	approx. 11,0 x 6,0	m
Total height	approx. 4,6	m
Machine weight	approx. 30.000	kg

CNC-Control HEIDENHAIN iTNC 530

Digital sequential control, including digital drive control, hard disk storage, 15" TFT color screen

Working Cycles:

Standard drilling and milling cycles, deep drilling, thread cutting with and without compensation chuck, milling of grooves, rectangular and circular pockets, rectangular and circular journals, boring, drill milling (helical path), line cutting, drilling patterns, head swiveling, reverse countersinking, displacement and/or rotation of the coordinate system, mirroring, dimensional factor also axis-specific,
linear interpolation on 3 axes, circular interpolation on 2 axes and on 3 axes with rotated working plane, swiveling the machining plane, shell milling

HR 410 – Electronic handwheel for operating all axes

Connection Data

Operating voltage	3 x 400	V
Operating frequency	50	Hz

Equipment and accessories

- Universal milling head UAD, 0.02x0.02°, positioning via internal Hirth serration
- Spindle speed max. 6,000 rpm
- Axis drives via precision ball screws and digital servo motors
- HEIDENHAIN iTNC 530 CNC control
- HEIDENHAIN HR 410 electronic handwheel
- m&h 3D touch probe
- Swiveling control panel for machine operation in front of or behind the machine
- Automatic tool changer with 60 magazine slots
- Dual-circuit coolant system with belt filter and 350 l capacity, 36 bar high-pressure pump, and internal coolant supply through the spindle
- Three chip conveyors, two of which are located in the work area
- Telescopic steel cover for the X-axis
- Vertical guide at the bottom covered with steel curtain
- Work area cladding closed on the sides, including large viewing windows
- The manual sliding doors at the front of the machine can be opened along the entire length of the clamping table.
- Preparation of 4th axis for placement of a rotary table on the machine table
- Attachable rotary table Ø 1,250 mm, integrated into the control system as a complete 4th axis
- Lighting of the work area
- Paint finish RAL 7035 light gray / RAL 7016 anthracite

Service package „RECONDITIONING“ – Included scope of supply

- Complete disassembly of the machine into its individual parts
- Extensive and thorough cleaning of the machine and all accessory components
- Technical assessment and inspection of the machine and all individual parts by our specialist technicians
- Any visible defects or defective parts identified during the inspection are professionally repaired or replaced by our experienced service team
- Overhaul of the telescopic covers
- Overhaul of weight balancing cylinders
- Replacement of all scrapers
- New energy chain and lubrication lines for the table axis
- New windows for the working area
- Inspection and overhaul of the milling head, including spindle bearings
- The eye-catcher for your production - new paintwork with high-quality and robust 2K machine paint protects the machine structure and guarantees an attractive appearance
- Testing of machine movements and functions under power in our showrooms prior to delivery

→ You receive a fully tested and functional machine that you can use for production immediately

Machines that have undergone our "REFURBISHMENT" service package are no longer comparable to standard used machines on the market, either technically or visually



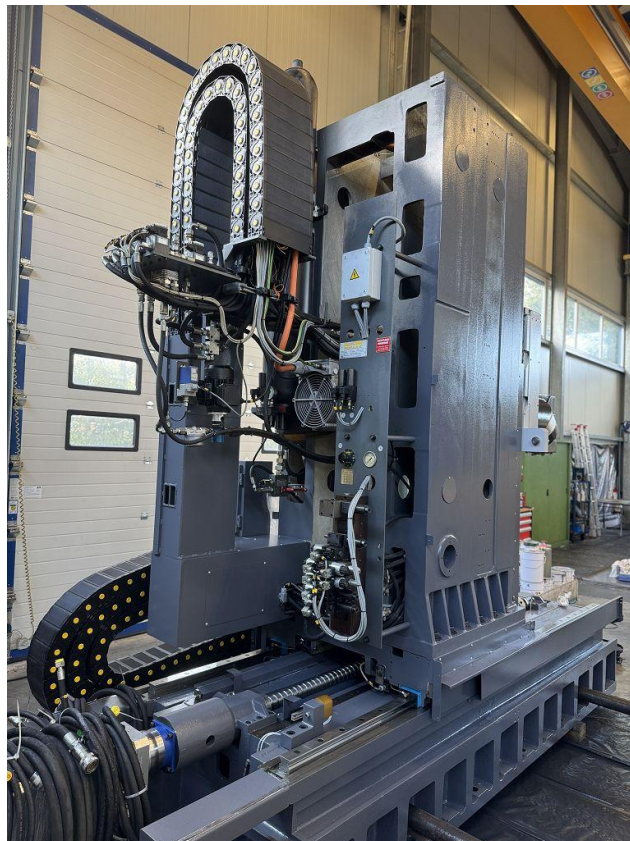
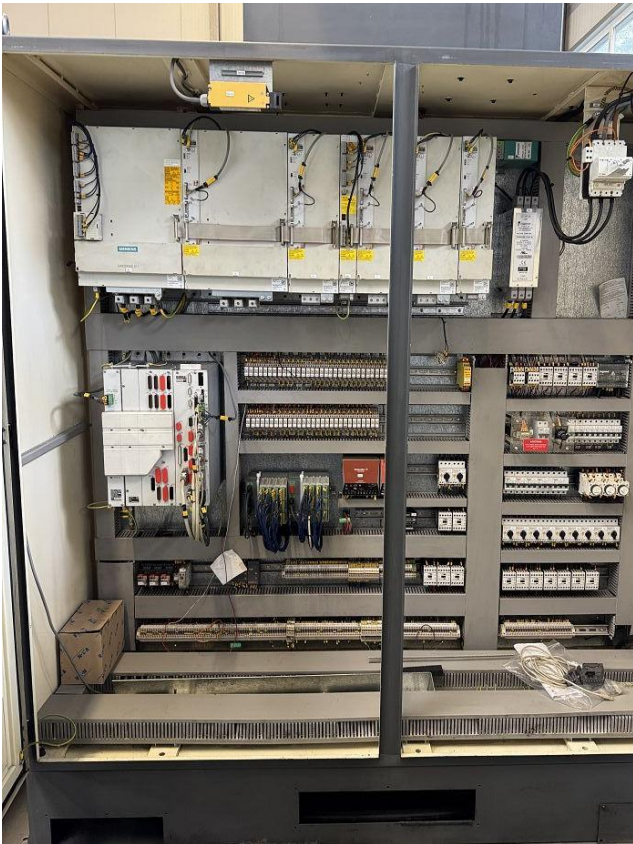
Your address for
high quality machine tools

FLECKENSTEIN

Werkzeugmaschinen

Technical Datasheet CNC-Bed Type Milling Machine with Rotary Table

ANAYAK VH-4000Plus



Tel. +49 (0) 6096 / 97060 | fleckenstein@fleckenstein-machine.com | www.fleckenstein-machine.com



subject to error and prior sale

page 5 of 5